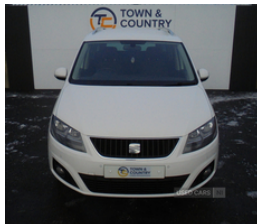


## Seat Alhambra 2.0 TDI CR Ecomotive SE 5dr | 2013

# £7,995

**FULL SERVICE HISTORY INCL TIMING BELT KIT \* 7 SEATER**



**March 2013 Alhambra 2.0 TDI CR Ecomotive SE 5dr**

- Good spec
- ONLY 88,000 miles
- MOT to Sept 2025
- Full service history including timing belt kit
- Just 3 owners from new
- 7 seater
- Superb condition throughout
- ONLY £7995

### Vehicle Features

'Guide me home' headlamps, 3 point seatbelts on all seats, 3 spoke leather steering wheel, 3 x 12V power sockets, 3 zone climate control, 4 cupholders, 4 Lashing eyes in boot, 8 speakers, 230V AC inverter, ABS, Adjustable front armrest with storage compartment, Adjustable head restraints, Auto dimming rear view mirror, Auto hold function, Automatic lights on sensor, Automatic rain sensing wipers, Bluetooth hands free telephone connection, Body colour bumpers, Body colour door handles, Body colour door mirrors with integral indicators, Chromed centre radiator grille surround, Chrome effect dashboard facia, Chrome roof rails, Chrome side window trim, Cornering front fog lights, Cruise control, Curtain airbags, Dark tinted rear glass, Dashboard storage with cover, Diesel particulate filter, Driver's electric adjustable lumbar support, Driver alert system, Driver and passenger airbags, Drivers knee airbag, Easy entry seats, Elec heated + adjust door mirrors, Electrically operated child

<b>Miles:</b>	88000
<b>Fuel Type:</b>	Diesel
<b>Transmission:</b>	Manual
<b>Colour:</b>	White
<b>Engine Size:</b>	1968
<b>CO2 Emission:</b>	146
<b>Tax Band:</b>	F (£210 p/a)
<b>Body Style:</b>	MPV
<b>Insurance group:</b>	18E
<b>Reg:</b>	SV13TVL

### Technical Specs

DIMENSIONS	
<b>Length:</b>	4854mm
<b>Width:</b>	1904mm
<b>Height:</b>	1720mm
<b>Seats:</b>	7
<b>Luggage Capacity (Seats Up):</b>	267L
<b>Gross Weight:</b>	2510KG
<b>Max. Loading Weight:</b>	763KG

PERFORMANCE & ECONOMY	
<b>Fuel Consum. (Urban Cold):</b>	40.9MPG
<b>Fuel Consum. (Extra Urban):</b>	57.6MPG
<b>Fuel Consum. (Combined):</b>	50.4MPG
<b>Fuel Tank Capacity:</b>	70L
<b>Number Of Gears:</b>	6 SPEED
<b>Top Speed:</b>	120MPH
<b>Acceleration 0-100 km/h:</b>	10.9s
<b>Engine Power BHP:</b>	138.1BHP

locks on rear doors, Electric folding door mirrors with puddle lamps, Electric headlight adjustment, Electric speed sensitive power steering, Electronic engine immobiliser, ESP+EBA, Folding rear seats, Front/rear door stowage bins, Front/rear floor mats, Front/rear reading lights, Front and rear electric windows, Front and rear parking sensors, Front and rear seatbelt reminder, Front seat back fold out tables with cupholders, Front seatback pockets, Front seats folding into table, Front side airbags, Height/reach adjust steering wheel, Height adjustable front seatbelts with pre-tensioners and load limiters, Integrated sunblind for rear side windows, Isofix child seat preparation, Leather gear knob, Lockable/illuminated air conditioned glovebox, Locking wheel bolts, MDI with USB/iPod connection cables, Multi function display, Multi function steering wheel, Outside temperature gauge, Overhead console with sunglasses holder, Passenger airbag deactivate switch, Passenger seat height adjuster, Passenger seat lumbar adjust, Rear air conditioning with separate controls, Rear wiper, Reclining 2nd row seats, Remote central locking + deadlocks, Removable load compartment cover, Reverse activated kerb-view adjustment on passenger's door mirror, Stop/start system, Storage bins under drivers seat, Storage under front passenger seat, Sunvisors with illuminated vanity mirrors, Trip computer, Tyre pressure monitoring system, Under floor storage in 2nd row, Voice control system, Volcano grey door & dashboard decorative inserts, Volumetric alarm with back up horn